

PRODUCTS:

[Heavy Duty Dog Door®](#)

[Big Dog Door™](#)

[Easy Pet Door®](#)

[Drop-In Closing Panel](#)

[Electric Heat Dog Mats](#)

[Easy Dog Kennel](#)



Call Toll Free **1-800-789-0203**

[Satisfaction Guarantee](#) | [Warranty](#) | [Testimonials](#) | [Dealer Inquiries](#) | [Site Map](#)

Heavy Duty Dog Door® / Big Dog Door™ Pet Door Installation Instructions

[Installing on a wall](#)
CLICK HERE

[Installing on a house
or garage door](#)
CLICK HERE

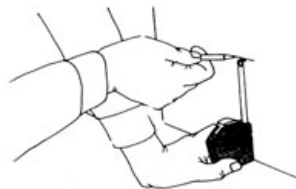
[Installing a
drop-in closing panel](#)
CLICK HERE

[Guillotine Closure Installation](#) CLICK HERE

[Special Dog Door Training for the "Timid Dog"](#) CLICK HERE

Installing On a Wall:

The Heavy Duty Dog Door® and Big Dog Door™ are installed on the outside surface of a building, wall or door, etc.



Measure height

Step #1:

Measure the belly height of your pet from ground level to his underside to find the correct height of the door opening. Bottom edge is usually 6" to 12". Do not mount flush to ground. For the **Heavy Duty Dog Door™** cut the opening 12-1/2" wide x 17-1/2" high. For the **Big Dog Door™** cut the opening 16-1/2" wide x 25-1/2" high.

Step #2:

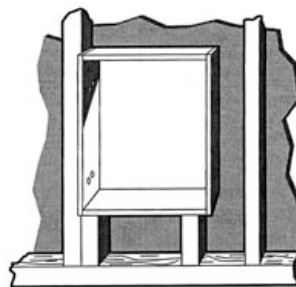
If mounted on garage or house wall, frame the depth of the wall to form a tunnel through the wall. (Use 2" X 4" or 2" X 6" material.) If needed, add a least a 1/2" x 1 1/2" flat outside mounting surfacing.

Step #3:

Place door over opening and use the enclosed two 1 1/2" wood screws to hold door to opening.

Step #4:

Show dog how to use door. Your dog will learn to use your pet door almost at once, but there are a few which may be a little nervous at first.



Example of tunnel in frame wall

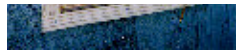


The most important rule is to be patient.

Do not let the dog have a bad experience or it may become frightened.

Most dogs can be trained to use a pet door in a matter of hours. Your dog will respond to encouragement, repetition and play in particular.

Alternatively, use the door flap as part of a game - throw a ball through, for instance. As your dog responds to your encouraging calls, help it through the door, patting and congratulating it. Repeat the game several times, continually encouraging the



Cut opening, if needed add a 1-1/2" flat mounting surface.



This is how an installed door looks.



animal with positive gestures and comments. Within a short time your dog will be totally familiar with its pet door and use it happily on its own.

I have seven-week old lab pups that use these doors, naturally, your dog will learn too.

Problems...see Special Dog Training Instructions at end of page

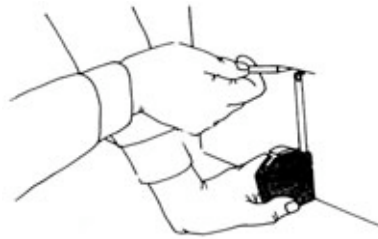
Installation Tips:

Install 1/8" felt or rubber weather stripping on surface of building or door. Do not put rubber weather stripping on Gun Dog House Door®.

NOTE: If your door does not close at the bottom, the door is installed incorrectly. Unscrew door and move 1/4" lower. If there is a gap between top strap and upper doorframe, move door 1/4" higher.

[BACK TO TOP](#)

Installing on a house or garage door



Measure height.

The Heavy Duty Dog Door® and Big Dog Door™ are installed **on the outside** of a house door.

Determine Height

To find correct height of the hole for your dog, measure the belly height of your pet. (Average installation is six to twelve inches.)

Mark the height in pencil on one side of your door.

Drilling and cutting hole

The **Heavy Duty Dog Door®** hole size is 12-1/2" x 17-1/2". For the **Big Dog Door™** the hole size is 16-1/2" x 25-1/2".

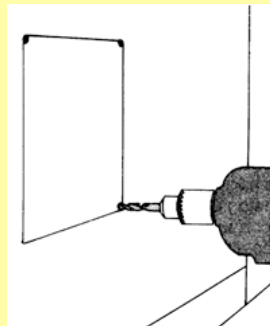
Drill half inch in each corner. Insert jigsaw into drill hole and cut out hole. See photo 1.

If installing on a steel door, cut hole one-half inch larger, glue one quarter inch pine or cedar trim inside opening.

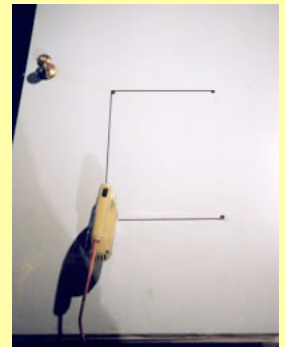
See photo 2.

(Order Door Trim Kit)

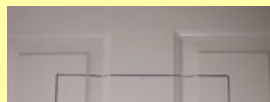
If installed on a raised panel door, cut hole in center of door. (order trim kit) glue/caulk pine or cedar trim to cover styrofoam and install trim to inside/outside of door surface.



Draw template/drill 1/2" holes. Opening 12-1/2" x 17-1/2" on the Heavy Duty Dog Door®, 16-1/2" x 25-1/2" on the Big Dog Door™.



Jigsaw cutting to each (1/2") drilled corners
Photo 1

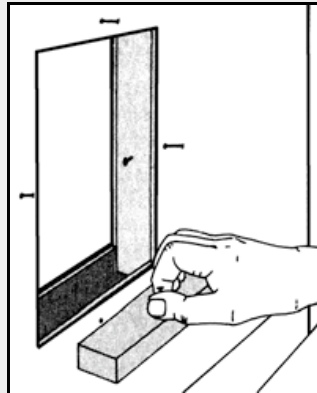


(Order Door Trim Kit)

Door Trim Kit



If installing in a hollow core door, use four strips of wood the same width as the hollow between the panels in your door. Position the wood so that they are flush with the edges of the hole. Either glue, nail or screw the strips. Frame the outside/inside hole with (2) inch by (1/4) inch lengths. Again, either glue, nail or screw to door surface as the photos illustrate.



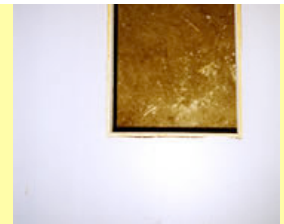
Hollow core reinforcement wood strips



Cut raised panel door surface same as Photo 1

(Order Door Trim Kit)

Photo 2



Steel door: Note hole is cut 1/2" larger to allow for 1/4" thick wood inserts. Opening 13" x 18"

on the Heavy Duty Dog Door®,

(Order Door Trim Kit)

17" x 26" on the Big Dog Door™.

Photo 3



Use silicone caulking around trim kit for add insulation. To quiet door

closing staple 5/8" window felt to sides and bottom.

Photo 5



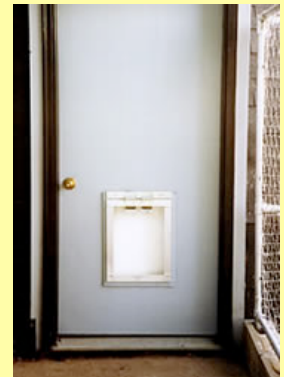
Frame the inside and outside of the hole on the door - use 1/4" cedar or pine 2" wide.

Photo 4



Installed door trim kit.

Photo 6



Heavy Duty Dog Door® installed on a metal door.

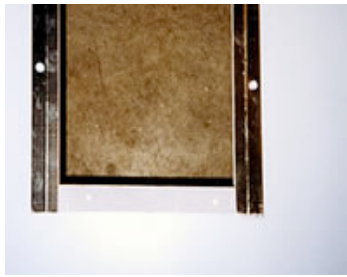
[BACK TO TOP](#)

Drop-in Closing Panel Installation Instructions



Closing panel is **installed on the inside** of building or door.

1. Construct a 2" wide frame on inside mounting surface.
2. Place channel angle one inch from dog door cut opening.
3. Install one-inch tabs at the base of each channel.
4. Slide heavy-duty closure into channel. Remove as needed.



*Install channel on inside of building
Photo 1*



*An installed closure on metal door
Photo 2*

[BACK TO TOP](#)

Guillotine Closure Installation Instructions

Step 1

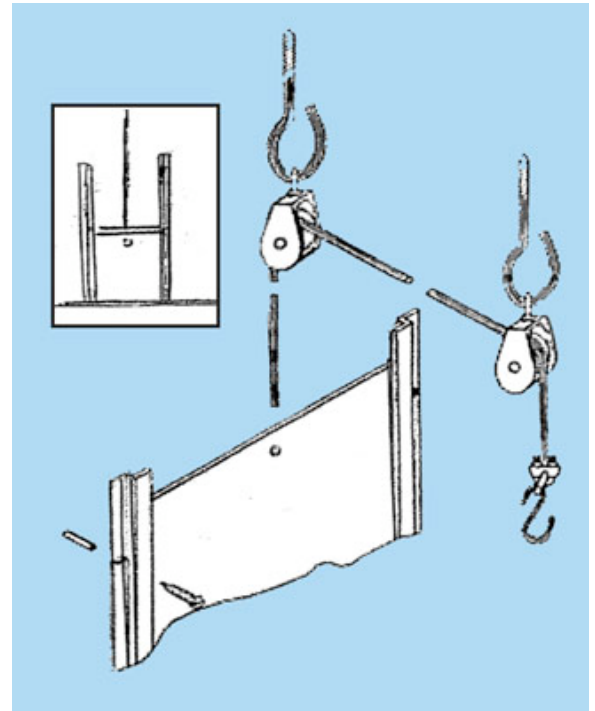
Place panel against wall as a template. Install each channel so the panel slides in its grooved track.

Step 2

Drill hole or install a eye hook in panel. Install two pulleys to ceiling and attach a cable/rope to the 3/8" polypropylene panel.

Step 3

Slide polypropylene panel in channels as needed.



[BACK TO TOP](#)

"Special" Dog Door Training for the "Timid Dog"



Whether you have an adult dog, or a new puppy, teaching him how to use a Gun Dog House Door® (GDHD) will be done the same way.

When you install your dog door, make sure you measure the



This little 7 week old Lab pup is already a pro at using the Gun Dog House Door®.



This yellow lab is 7 weeks old and the GDHD is 20 years old...and still working great.

"rise" of your dog (the measurement from the floor to the lowest part of your dog's chest or stomach). This measurement tells you where to place the "bottom" of your dog door. The bottom of your dog door should be an inch lower than the "rise" of your dog. If you have a puppy you will need to install the dog door one inch from the ground; and you will need to re-install it at higher intervals as your puppy grows. Another option is to take an educated guess as to how tall your dog will eventually be, install the dog door at the appropriate height, and construct a "puppy-ramp" so your puppy can reach the dog door and go through it comfortably.

Once the frame of the GDHD door is installed in a wall or door, leave the GDHD off at first. Have someone stay inside with your dog while you go outside. Call your dog through the "hole" (door frame without the GDHD). When he goes through and comes to you, praise him lavishly and give him a treat. Now have the person inside the house call him through the "hole." When he gets to them, they should praise it and offer a treat as well. Do this at least 3 times and no more than a dozen. After this, your dog will know there is a hole in the wall or the door especially for him.

Leave the GDHD off the cut opening for one full day. Encourage him to use his opening by not letting him use the "real" doors. Instead, you use the real door and say to your dog, "Go to your door!" pointing in the direction of his dog door. You may need the help of someone inside to "help" the dog find his new door. After a half a dozen times, your dog should like this new game! If you have a very young puppy, do not expect them to learn "Go to your door" for many weeks or months; still give them the command in a happy voice, and have someone inside show them where their door is every time. It sometimes helps if you are outside (after going through a real door) and someone else helps your dog or puppy find the doggie door as you call him from outside.

On the second day, install the GDHD. Now, you will need to repeat the same exercise as when you first sent your dog through the "hole." But this time, the person on the same side of the door as the dog will need to "push" the GDHD open for him. Each time the dog goes through the door, push the GDHD less and less for him. It is important that the dog gets used to the feel of the GDHD on the back of his head so once your dog has begun going through the door, let go of the GDHD so he feels it on his head and body as he goes through the door. Eventually the dog will need to push the GDHD by himself and dogs are usually hesitant to do this at first. He will probably put his nose down by the bottom of the GDHD and wait for the GDHD to move (after all, it has up to now). At this point, push the GDHD slightly so that your dog can see it is a moveable object, let the GDHD bounce back to the closed position. The best way I can explain it is that you are "poking" GDHD using short, quick pokes. This gives the dog a glimpse of an opening and encourages him to poke the door himself. At this stage, some dogs begin going through the door with ease, others become quite excited, but still haven't figured out that they can push the door open. If your dog will not push the door open by himself yet, remove the GDHD and install a piece of carpet onto the opening. You want the carpet to have a least a 1" opening on the sides and bottom. The dog should feel more comfortable pushing the carpet on its own. After 2-3 days, install the GDHD and with our enthusiastic encouragement and praise, your dog should be able to push the GDHD now with no problem

[BACK TO TOP](#)

Thank You, Carl

Warranty - Lifetime Warranty means for the life of your dog!

TROUBLE??

Call 218-789-7134 or write:
Gun Dog House Door® Company
10662 70th Street South, Sabin, MN 56580

www.gundoghousedoor.com

Gun Dog House Door® Co.

Better Dog Doors & Pet Doors

1-800-789-0203 • 218-789-7134 • Fax 218-789-7128
10662 70th St. S. • Sabin, MN 56580

[Heavy Duty Dog Door™](#) | [Big Dog Door™](#) | [Easy Pet Door®](#)
[Drop-In Closing Panel](#) | [Electric Heat Mats](#) | [Easy Dog Kennel](#)
[Kennel Design](#) | [Installation Instructions](#) | [Mail/Fax Order Form](#)
[Link to Us](#) | [Contact Info](#) | [Dog Door - Home](#) | [Links](#) | [Site Map](#)

Copyright © 2000- Gun Dog House Door® Company

