

## Dogwalk pet door installation instructions.

Ensure you read and fully understand these instructions before you commence with installation.

Dogwalk Pet Doors have been designed for ease of installation and to ensure that once the door has been installed that no screws are visible, this is to provide an aesthetically pleasing result. Any good handy man with knowledge of power tools and basic home construction capabilities can install this product. The woven pile seal has been designed for ease of replacement. This is a consumable item given that grease from the dogs coat and constant rubbing will reduce its effectiveness over time. The woven pile can be replaced without having to remove the door - a major advantage. Replacement pile is available from your local distributor.

**Important:** Before you attempt to cut the hole in your wall or door please double check that there is no electrical wiring or plumbing in the vicinity chosen for installation. Also ensure that you wear protective eye wear and gloves.

**Children:** We do not recommend placing the dog door in a position where young children may gain access to an un-fenced swimming pool. Please keep your children safe.

**Security:** For security purposes we recommend the doors are pop riveted and silicon sealed to make the product difficult for possible intruders to tamper with, refer steps 10 & 11.

**Tools required:** clamps, caulking gun and silicon (Dow corning 119SSL clear silicon sealant or equivalent), drill jigsaw, level, measuring tape, pencil, pop rivet gun.

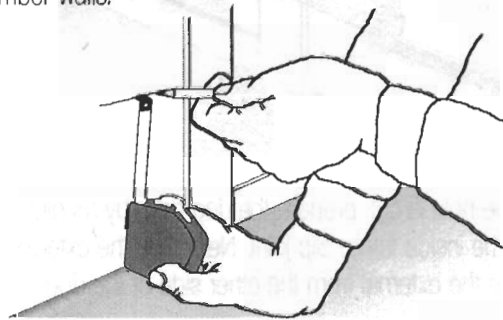
### Installation steps:

1-

Once you have chosen the area where you wish to install the door, check that there is nothing above the door that will interfere with the lifting of the security slide.

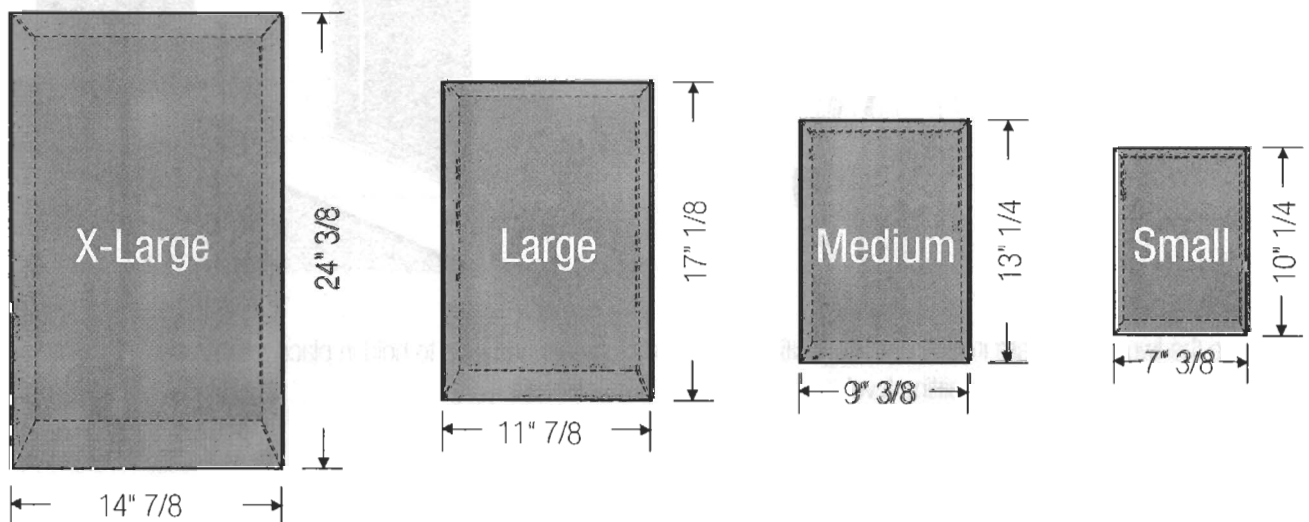
2-

Mark off the position keeping in mind that generally the bottom of the door should be a few inches above the door rail for wooden doors, or a few inches above the bottom plate for timber walls.



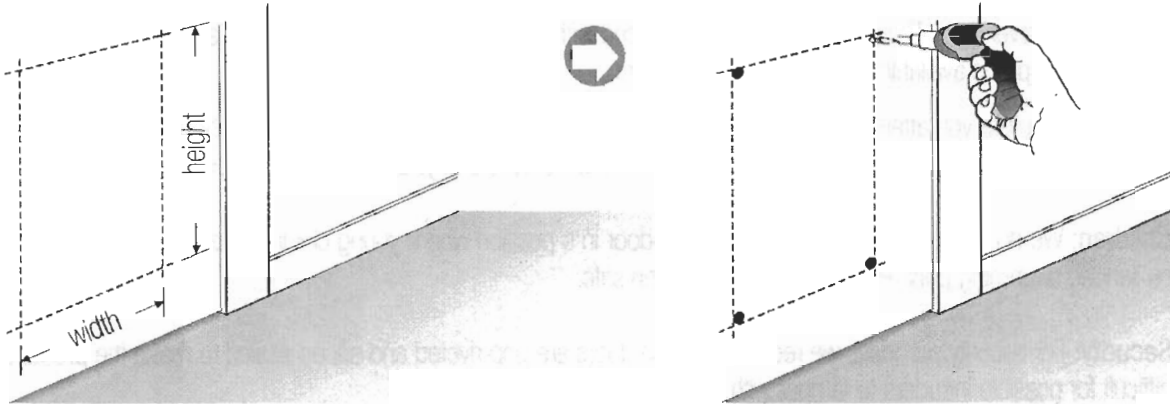
3-

Choose the template size from the diagrams below. i.e. X-Large, Large, Medium or Small



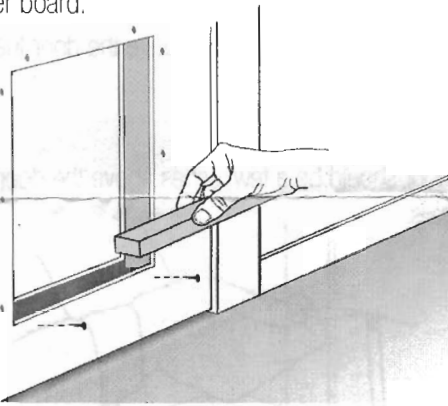
## Installation steps continued:

- 4- Mark the cut out onto the door, or wall, starting at the top. Use a level to mark the top line ensuring that the cut out is level. Double check the position and level then proceed to drill four 1/2" holes on the inside of each of the four corners of the marked hole cut-out.

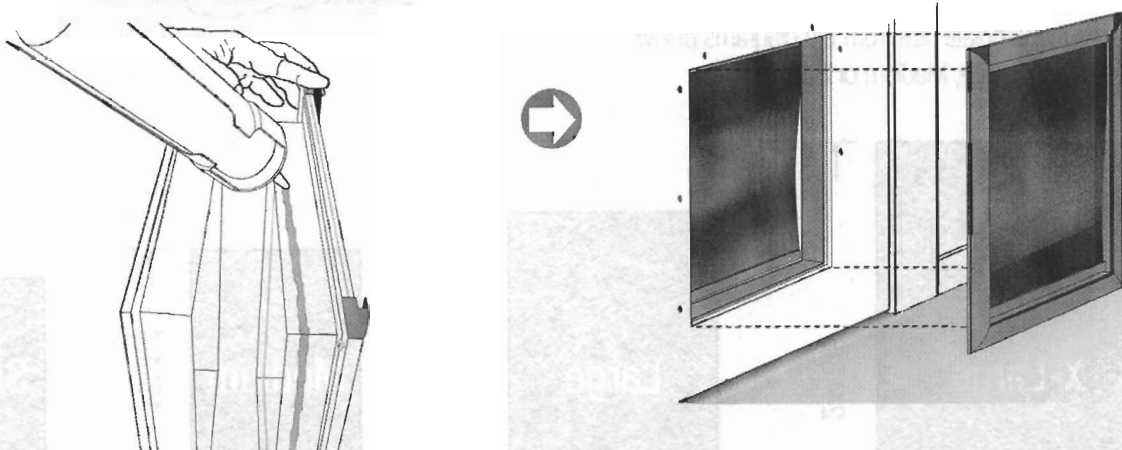


- 5- Using a jig saw start to cut from the bottom right hand corner and proceed to cut from corner to corner. For thick walls it will be necessary to mark and cut from both sides of your wall ensuring that each cut out lines up with the other.

- 6- Should the position you have chosen have little or no support behind the cut-out, it may be necessary to line the cut-out with a timber lining. This is common with polystyrene clad plastered external walls and interior walls where the only support is gib plaster board.



- 7- Now that the hole is cut, prepare the dog door by running a neat but generous bead of clear silicone sealant around the exterior of the inside frame slip joint. Next slide the external frame into the cut-out and finish placement by sliding the internal frame inside the external from the other side of the door / wall.

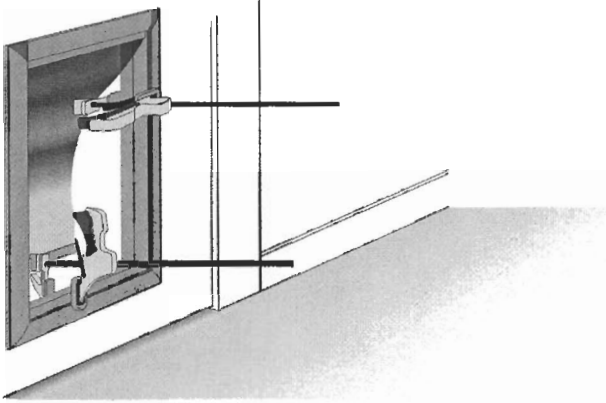


- 8- Once the two sections are in their correct position push tightly together and tape to hold in place temporarily. Now recheck that the door is sitting level.

## Installation steps continued:

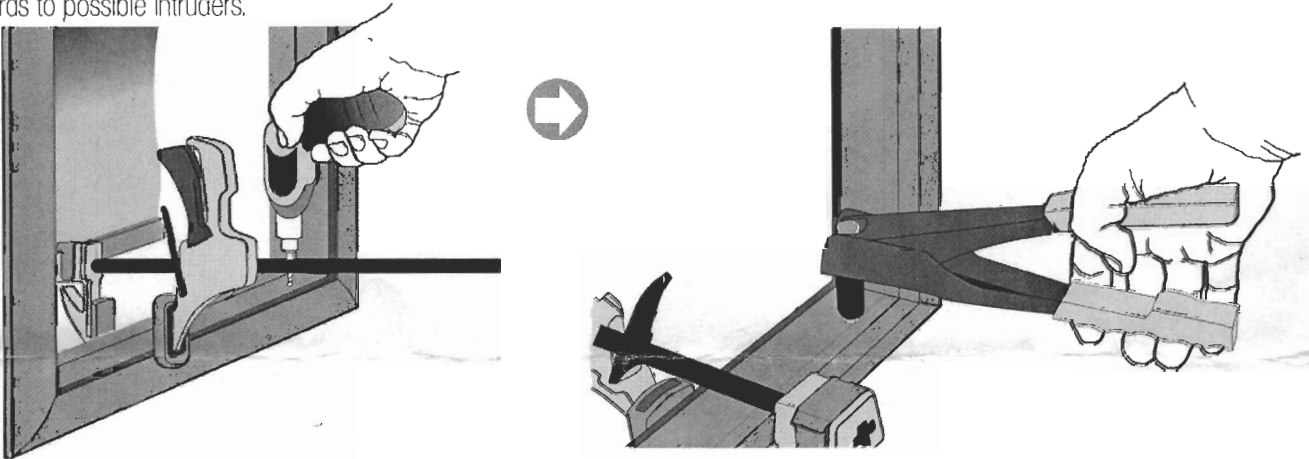
9-

Using standard clamps, tighten the clamps until the door is firmly clamped to the door / wall. Be carefull not to over-tighten the clamps which may result in damaging the aluminium frame.



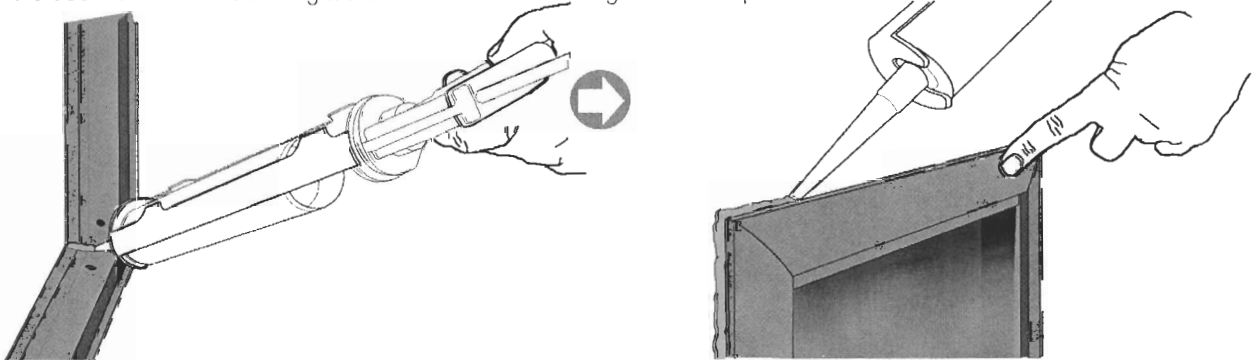
10-

Now drill 8 holes using the drill bit provided, 1' - 1 1/2" in from the corners and pop rivet using the rivets provided. We recommend using the pop rivets as they are more difficult to tamper with, thereby making the door more secure with regards to possible intruders.



11-

Once the door is securely fastened silicon all four internal corners to provide a weather seal. An additional seal should also be placed around the outside of all four sides internally and externally. Once the door has been left overnight the silicon will cure making it almost impossible for an intruder to remove.



12-

A non-slip PVC strip is provided for wall-mounted doors only, to apply to the bottom and side of the door at your discession. Ensure the PVC does not interfere with the flap prior to gluing. Your local DIY store will recommend a suitable adhesive.

